



Living with Hope



Contents

About Us

- 4 Letter from the Director
- 6 Mission, Vision and Values
- 7 Our Team
- 8 Volunteering

How we Help

- 10 Methodology
- 12 Testimonies
- 13 Living in Betel
- 14 Income Generating Projects
- 16 Professional Assistance
- 18 Street Outreach
- 18 Prison Ministry
- 20 Training
- 21 University Internships

Who we Help

- 22 Statistics
- 24 Women's Houses
- 26 Youth Ministry
- 28 Kilo of Love
- 29 Frequently Asked Questions
- 31 News
- 32 Betel en Asia
- 34 Photo Collage
- 36 Betania 2023
- 38 Transparency
- 39 Directory

Cover photo:
Betel Mongolia leadership team

Healing, Restoration and Change

Letter from the Director

Dear Friends,

Once again on behalf of the Betel family of Churches, ministries, communities, rehab programs and social initiatives, it is a pleasure and honor to present a visual and factual presentation of Betel's activities among the nations.

To say that we are living in 'trying times' is an understatement. Betel, along with other public and private institutions, has been confronted and surrounded by challenges this last year. We believe that in the pages of our Annual Report you will see that Betel has ministered light and grace to a multitude of individuals and families.

We would like to thank our friends and supporters for all the practical and personal help and encouragement that Betel has received. Your support has been essential. If the truth be known, all our supporters are indeed a very important part of Betel's story.

Beyond Betel's historic role as one of the principle Christian Rehab ministries offering residential care to substance abusers, we have been able to extend our program, facilities and aid to the large and growing numbers of marginalized immigrants arriving in Europe today. We believe that this new added dimension in Betel's ministry will only increase in the future.

As you read our Annual Report, it is our hope that you will see in the faces and activities of the men and women, the essence of what makes Betel an effective entity for healing, restoration and change in the troubling day in which we live.



Elliott Tepper
Director of Betel International



Mission

Our mission is to restore lives damaged by alcoholism, drug abuse and social exclusion. We help individuals to become active members of their community by building values, skills and character.

Vision

Our vision is to help the most vulnerable in society and to empower those individuals who embrace the Christian principles and ethos found in Betel.

Values

- › We are inspired by Christian faith
- › We defend basic human rights and the dignity of the individual
- › We consider the family to be the fundamental institution in society
- › We are committed to and embrace generous hospitality
- › Our community houses are free of charge
- › We strive for transparency, effectiveness and efficiency in the utilization of our resources.



Our Team

The Soul of Betel

The people that make up our team are the soul of Betel, driving our social outreach and offering hope to people with addiction problems and those who are at risk of social exclusion.

Men and women who have come through the program and whose lives have been transformed supervise, with the help of professionals and volunteers, the fulfillment of Betel's mission: to see lives restored.

Our professionals, who provide national and international technical support, are located in Madrid, Malaga, Barcelona, Tarragona, Seville and Zaragoza. All of our regional and international communities have access to Betel's staff of social, medical and pastoral professionals.



Betel Madrid office

“Those whose lives have been transformed supervise the fulfillment of Betel’s mission: to see lives restored”

Board of Directors



**President
Elliott Edward Tepper**



**Vice President
Luis Pino Sanchez**



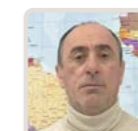
**Secretary
Eduardo Hdez.-Lissen Bonilla**



**Treasurer
Juan Carlos Matesanz Hernandez**



**Board Member
Javier Gonzalez Espejel**



**Board Member
Rafael Delgado Ramiro**

Professionals Spain	Nº
Social Services Director	1
Area Directors	21
Youth Activity Director	1
Medical Doctors	4
Dentists	6
Dental Assistants	6
Social Workers	4
Social Educators	2
Psychologists	2
Family Therapists	2
Attorneys	3
Economist	1
Architect	1
Graphic Designer	1
IT Specialist	1
Admin Assistants	10
Maintenance	3
Total	69

2023 Madrid, Malaga, Barcelona, Tarragona, Seville y Zaragoza



Volunteer from Mexico (right) serving in Madrid



Volunteer from Holland (right) serving in Madrid



Volunteer from England (left) serving in Madrid



Volunteer from South Korea serving in Malaga



Volunteer from the United States (right) serving in Betel UK



Volunteer from Mexico serving in Bulgaria

International Volunteers

Living in community

In 2023, Betel's International Internship Program experienced a strong recovery from the global pandemic. With borders open and travel accessible again, we received double the amount of application requests compared to the previous year.

This year the program has incorporated two new destinations where volunteers can serve in Betel: Portugal and Brazil. Some of our international volunteers have served back-to-back internships in more than one nation.

Betel's internship Program received **159 application requests** from **39 countries** and **5 continents**, with a total of **17 volunteers** serving in Spain, England and South Africa during 2023.

Opportunities in

- › **UK**
- › **Spain**
- › **Czech Republic**
- › **Finland**
- › **Germany**
- › **India**
- › **Kazakhstan**
- › **Portugal**
- › **Brazil**
- › **Russia**
- › **UK - USA***

* For US citizens

More information:
betelinterns.org

Social Volunteers

Part time service at your local Betel Center

At each local Betel delegation, there are opportunities to serve on a part time basis, as way to support and help others.

Part-time volunteers collaborate in different activities, such as: helping at the charity shops, food preparation in our community kitchens, food distribution for the needy, and administrative office support.



Part time volunteer (left) serving in the Madrid community kitchen



Pretoria South Africa
Betel community

Offering Hope

How we Help

Betel has developed a method that has helped transform many lives through a drug-free residential program inspired by Christian values.

Betel's social program is based on peer support. Residents help each other work through the process of restoration as they live, work and worship together. They carry out activities and projects that generate income to offer a totally free program.

Since 1985, Betel has helped tens of thousands of drug addicts,

“Since 1985, Betel has helped tens of thousands of drug addicts, alcoholics and homeless people restore their lives”

alcoholics and homeless people restore their lives. For this reason, Betel firmly believes that no one is beyond hope.

What do we offer?

- › Housing in a welcoming environment
- › A substance and tobacco free lifestyle
- › Support in the resolution of medical, dental, psychological, social and legal problems

Living in Betel

A Day in the Life

Every day at Betel brings new challenges. Caring for residents is based on *peer support*, a term that describes cooperation, reciprocity and teamwork. It provides a mutual benefit for the people who cooperate. This means that individuals who come to Betel in search of help, receive it from those who are in an advanced stage in their own process of recovery.

Residents participate actively, attending to both the needs of the community (cleaning, laundry, kitchen) and those of the Betel charity shops, with the collection of furniture and household items, organizing the store and interacting with the public.

The many activities carried out by Betel residents are a fundamental and distinctive part of the program, helping them to recover dignity and self esteem as well as facilitating the creation of support networks and active collaboration among the Betel men and women.

Betel residents receive the following attention:

- › Initial assessment interview
- › Social and clinical histories
- › Individualized care plan
- › Dental attention*
- › Legal attention
- › Referral to the public health system
- › Daily meetings
- › Family counseling
- › Training courses in values and Monitors Course
- › Annual International Camp Retreat

* Madrid location



Marseille, France
Collection of food donations



Madrid, Spain
Betel football-soccer team



Mallorca, Spain
Lunch at the men's house



Helsinki, Finland
Meeting at Betel's church



Madrid, Spain
Residents of the Mariblanca men's house

“I am so happy that there is a place like Betel for people to come to and find a new life”



Hi my name is Josh. I come from a small town from South Wales called Llanelli. I started using drugs at the age of 14, also at the age of 14 I started committing crime. When I turned 18 I was sent to jail for 2 years. I’m now 29 and have been in and out of jail for 14 years for multiple charges. I came to Betel to sort my life out and to restore everything that I had lost. I have given my life to Christ and found so much peace and freedom in Him. He has stayed faithful to me. I am so happy that there is a place like Betel for people to come to and find a new life, to find peace and freedom in Christ.

“I ended up on Betel’s doorstep and started a journey to full recovery and a changed life”



My name is Daniel Gibbons. My life had become very fractured from an accumulation of hurt, bad choices and a lifestyle of binging on drugs and alcohol. Things went from bad to worse when I started living with a friend in London. This is when Jesus told me he loved me and he had always loved me. After a year of relapsing I ended up on Betel’s doorstep and started a journey to full recovery and a changed life. I now support vulnerable people and bring love and encouragement to their lives.

“Coming to Betel has changed my life, finding Jesus had brought peace back into my life”



My name is Daniel Robertson. I was in addiction for 25 years, destroying families, relationships, friendships all through my selfish behavior. It was all about me. Coming to Betel has changed my life, finding Jesus had brought peace back into my life. I was completely lost and He helped me to find myself. I love Jesus.

Betel Stories

Enrique and Socorro, directors of Betel Almeria

Enrique’s Story

I entered Betel because I had a drug addiction problem, and it was here that I underwent my rehabilitation in the 1990’s. I never used drugs again.

Twenty-two years later, at the age of 55, I found myself in a very complicated economic and family situation. My marriage had broken up, I was feeling like a failure and no steady employment was available. I tried to make it work, but I couldn’t.

I returned to Betel looking for a way out, it was the spring of 2015. Here I found help, but in my mind I kept asking myself, “why am I here?”. Until one day I understood that there was a purpose for my life.

The following year I traveled from Madrid to Mexico as a Betel volunteer. There I met my beloved wife Socorro in 2017. We have been married for five years now.

We currently run the Betel Almeria Center. Sometimes I look back and see that I can summarize my life, in one word: gratitude. This year and a half in Almeria we have been able to see God’s hand in a tangible way. We feel that we are actually living in God’s will.

I want to encourage people not to lose hope regardless of circumstances. I believe that there is nothing more gratifying than to help others to turn their lives around the same way that I have been able to do.

Socorro’s Story

I met Enrique one day when he came to my church in Veracruz, Mexico, to present Betel’s social work. Later I was invited to come to Spain as a volunteer at the Betel Madrid women’s house. As the daughter of an alcoholic father, I had lived the tragedy of addiction growing up. My dad was unable to receive help because there were no rehabilitation centers where he lived.

Just before leaving Mexico for Spain, Enrique proposed to me. We got married in 2018 and our 5 years of marriage have been quite intense,

facing great changes, but through it all we have stayed close together.

Since we arrived in Almeria, we feel that it is the place where God wants us right now. We see the Betel men as family. We want the very best for them and we realize that they are worth it all. We have walked by faith and so far God has sustained us every step of the way.



Income Generating Projects

How Betel is Able to Stay Free

Betel offers a free residential program for everyone. This requires a great effort that is only possible thanks to the income generated from second hand charity shops and other activities, such as furniture delivery, calendar campaigns, cafes, restaurants, gardening, house painting, masonry, animal husbandry, handicrafts and book-store, which provide 95% of the

income needed to run Betel.

The resources generated sustain Betel's houses, where residents can stay with no maximum time limit, in a substance-free community with no waiting list.

It is not easy, but the team that makes up the Betel family strives each day to persevere and remain available as a resource for all those who need our help.

95%
of Betel's income comes from charitable business and activities



Almeria, Spain
Betel men at a Rastro Betel charity shop



Birmingham, UK
Betel men in front of a charity shop



Marseille, France
Paellas and Tapas Tarsis restaurant



Prague, Czech Republic
Furniture delivery



Seville, Spain
Betel cafe



Porto, Portugal
Betel café Cha Com Afetos



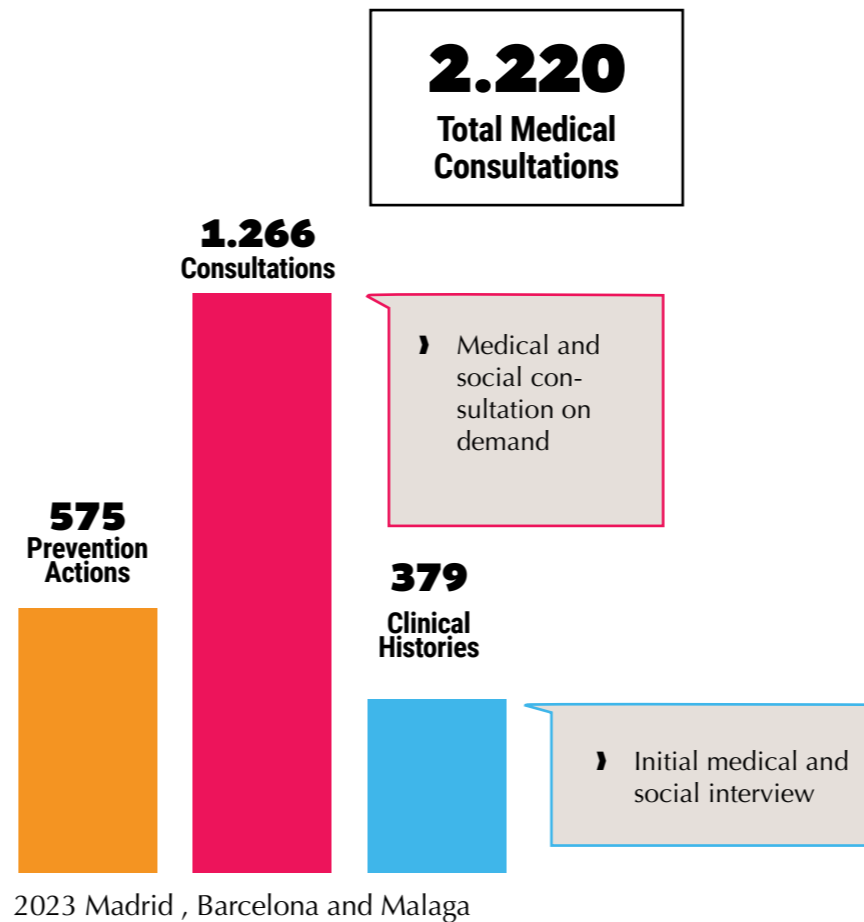
Almeria, Spain
Rastro Betel charity shop

Medical Care

Prevention and Help for Betel Residents

Betel Spain offers physical, psychological and social assistance with the objectives of preventing and treating disease. Assistance is available through Betel's own professional staff as well as through the public health care system, with Betel communities serving as stable housing for residents to receive treatment and support in their process of recovery and rehabilitation.

- Prevention**
- › Medical assessment before entrance
 - › Follow up visits for patients with chronic illness
 - › Psychological interview to explore general state of health
 - › Social worker interview to assess the need for documentation
 - › Prevention protocol for suicide risk



Dental Clinic

Leader in the sector of affordable dentistry

In Madrid, Betel has developed a dental health care project with a social approach, offering quality dental services at extremely affordable prices, provided by professionals with extensive experience.

In 2023, we attended 3,285 patients, with a total of 11,381 consultations, with the following distribution:

- › General public: **2.780**
- › Social Services, Caritas and Red Cross: **420**
- › Betel Residents: **85**

11.381
Consultations



Dental professionals in Betel Madrid

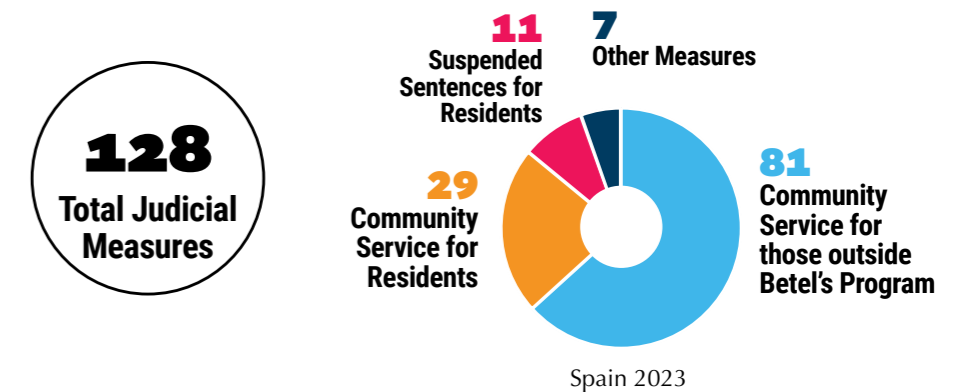
Legal Assistance

Support for Pending Judicial Matters

In 2023, 44% of users were admitted with pending legal-criminal matters. Betel promotes alternative compliance measures to prison, offering solutions such as Community Service, both for Betel residents and convicts outside the program.

Legal support is provided through:

- › Certificates of residence for courts and defense attorneys
- › Offering alternative compliance measures in place of imprisonment
- › Therapeutic progress evaluation reports at the request of Prison Social Services, courts and tribunals



Social Assistance

Information Services and Social Orientation

81
People Assisted

During 2023 Betel Madrid has been working to offer the best assistance with our information and social orientation service, which is available to our residents, individuals and families who receive help from our food distribution project and any other person who comes to ask for help.

Our objective is to provide support, resources and guidance in social work related matters

Services Provided

- › Information regarding access to social benefits
- › Orientation tailored to the demand for individual social needs
- › Assistance with administrative formalities and support with decision making

Betel Portugal

Betel Portugal opened in 1996 in Lisbon and Porto simultaneously. Today they have thriving communities in Lisbon, Porto and Faro.



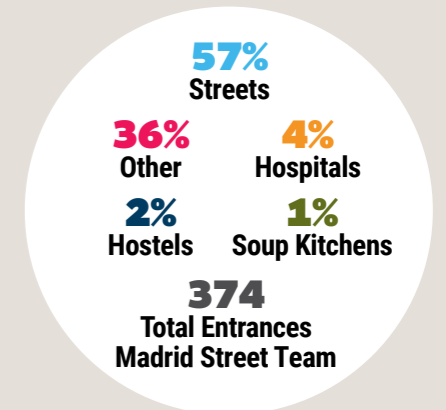
Betel Porto community

On the Streets

Seeking Out those in Need

The purpose of Betel's Street Outreach team is to search the city for people in need, making contact with those who are homeless and in social exclusion, explaining how Betel works and offering free entrance in Betel's residential program.

The outreach team offers direct help to individuals with difficulties accessing resources or support networks. The goal is to show them a way out of their situation, offering hope in the midst of hopelessness and an opportunity to change the course of their lives.



Prison Ministry

Freedom for the captives

Prison work is a focal point and key ministry in Betel Spain. Teams of volunteers organize special events at the penitentiaries, bringing hope, encouragement, and spiritual freedom to prisoners through activities such as musical performances, theatre, personal testimonies, video forums and conferences.

Throughout the year 2023, as a result of these visits, some prisoners have enjoyed leaves of absence from prison in Betel's communities.



Toledo, Spain
Youth group from Betel Madrid at Ocaña II prison for a Christmas event



10 Correctional Facilities visited by Betel Spain

- Alhaurin de la Torre (Malaga)
- Archidona (Malaga)
- Botafuegos (Algeciras)
- Ceuta
- Cuenca
- Madrid V (Soto del Real)
- Ocaña I and Ocaña II (Toledo)
- Seville I and Seville II



Marseille, France
Outreach team speaking to a man on the street and offering help



Seville, Spain
Outreach team with Betel Calendars



Marseille, France
Outreach team taking a man in to a Betel house

Training

25th Year of the Basic Monitor Course

The Basic Training Course for Monitors and Social Volunteers creates a meeting space for Betel residents and volunteers to learn the concepts of Betel's program from a bio-psycho-social approach focused on substance addiction. The course's subject matter covers prevention of various ailments and diseases, as well as the processes of social exclusion and marginalization, practical tools that provide effective assistance to people admitted within a system of peer support, thus motivating students to be agents of social change in their environment.



Basic Monitors Training Course at the Madrid Headquarters



Basic Monitors Training Course final evaluation

47
Students
26 in person
21 on-line



Madrid, Spain

Graduation day of the Basic Monitors Training Course

Higher Education Internships

Student interns make up an important part of the administrative-accounting and assistance areas of Betel at the International office in Madrid, under the close supervision of internship tutors.

During 2023 Betel maintained its Training Agreements with Secondary Education Institutions, as well as Educational Cooperation Agreements with several Universities, highlighting:

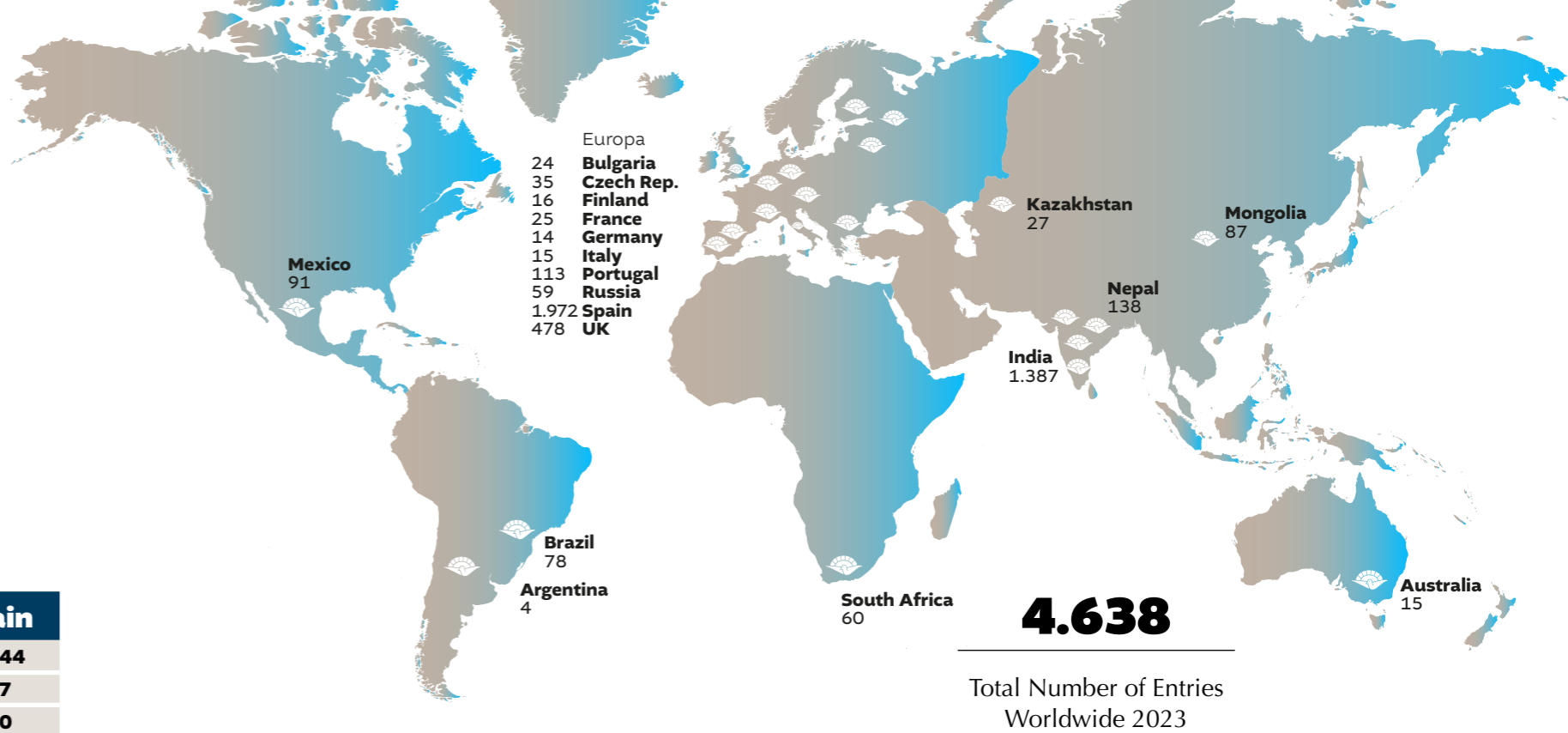
- › Complutense University Madrid
- › King Juan Carlos University
- › Pontificia Comillas University
- › Lancaster University (UK)



Testimony

"I have learned valuable lessons during my internship at Betel. I was able to collaborate with the team of professionals, who have a holistic view of humanity. All of Betel's volunteers treat the residents with dignity and not like a mere number. This makes Betel a uniquely compassionate place and I am very grateful to have been able to be part of it during my training."

Pablo Verdu
Ilerna FP



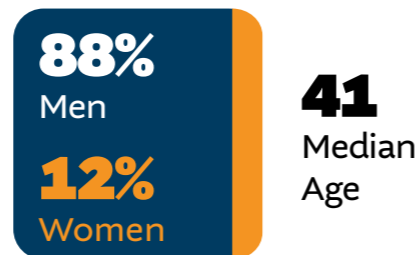
Profile of a Resident

Figures from Spain and Around the World

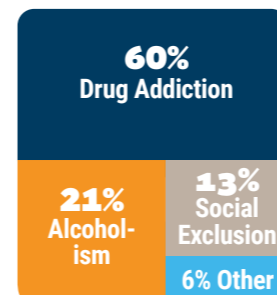
Data from our 2023 user profile shows that with respect to the previous year, the average age of the residents admitted has decreased, going from 44 to 42 years old for men and from 45 to 39 years old for women.

Likewise, the number of entries in Spain increased by 12% with respect to the previous year, with drug addiction as the main reason for entry, increasing from 44% to 60%. Cocaine was the main substance consumed, increasing from 27% to 40%. The majority of those admitted were single, increasing from 66% to 70%.

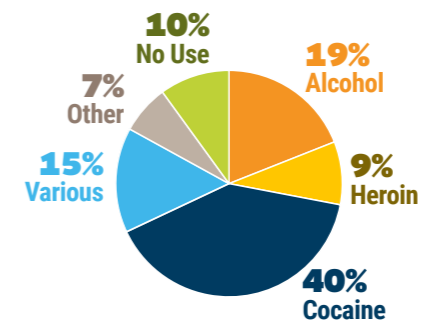
Madrid, Spain 2023



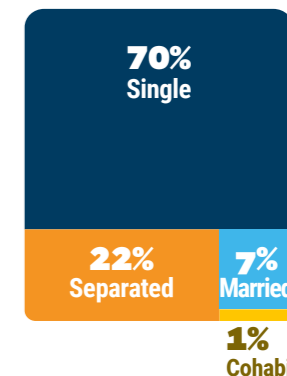
Reason for Entry



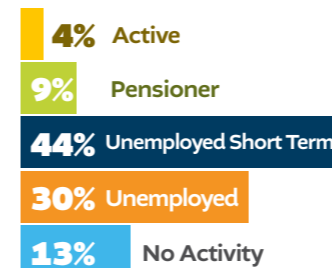
Substance Use



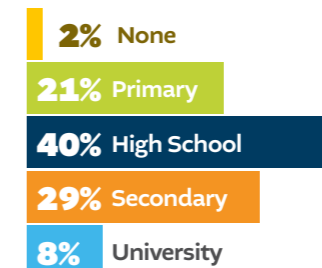
Marital Status



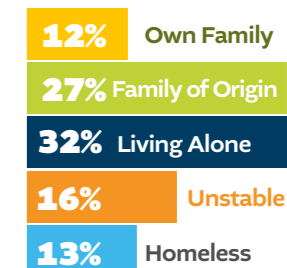
Employment



Education



Housing



Nationality



Women's Houses

A path to hope

Every year hundreds of women around the world are seeking help. Problems such as poverty, violence, social exclusion, drug dependence, alcoholism and other addictions trigger a flood of suffering, despair, anguish and poor health. These issues culminate into the stigma of marginalization and social isolation from which they cannot escape on their own.

The Betel women's communities provide the basic conditions needed for well-being. Housing and individualized attention allow women to improve their situation and generate a positive change in their lives. Betel is a path to hope.



Porto, Portugal
Betel women in the city center



Malaga, Spain
Community of Betel women



Eva's Story

I am Evangelina Nsue. I am 46 years old and I was born in Equatorial Guinea. When I was two years old my father died. Despite this I had the opportunity to go to school, graduate high school and go to university, obtaining a degree in Forestry Engineering.

At the age of 27, I got married and my life changed completely. I had to abandon my profession to take care of the house. The most important thing in this relationship was the birth of my son. My mother, who had been the pillar of my life, fell ill and I could not cope with the fact that she was dying little by little until God took her away. The loss of my mother and my failed marriage led me to a dead end and I started drinking day and night. I felt I had nothing left to do in this world. The only thing that gave me strength to get up in the morning was my son.

My sister contacted Betel. I entered with doubts, but God is wonderful and from the first day, I met the social educator, who made me see the world in a different way. Her professional ethics and her attitude made me see that there was a solution and that God was giving me an opportunity to change my life. She, along with the leadership team did everything possible to bring my son to Betel, which I have always been grateful. Without my son at my side I would not have been able to overcome this situation. I have felt very welcome here by everyone and in particular the leaders of the house, Lucia, and my pastors Oscar and Nines. I'm grateful for their emotional and spiritual support. They are there for me every day.

I have managed to get out of that dark hole, which I thought was impossible. Now I know that God is giving me the opportunity to change my life and I have to take advantage of it and move forward.

22 Houses for Women

- 4 Spain
- 5 India
- 5 UK
- 3 Russia
- 2 Mongolia
- 1 Portugal
- 1 Czech Rep.
- 1 South Africa



Prague, Czech Republic
Betel women enjoying a day in the city



Madrid, Spain
Women from the Torrelodones house at the Betel cafe

Youth Ministry

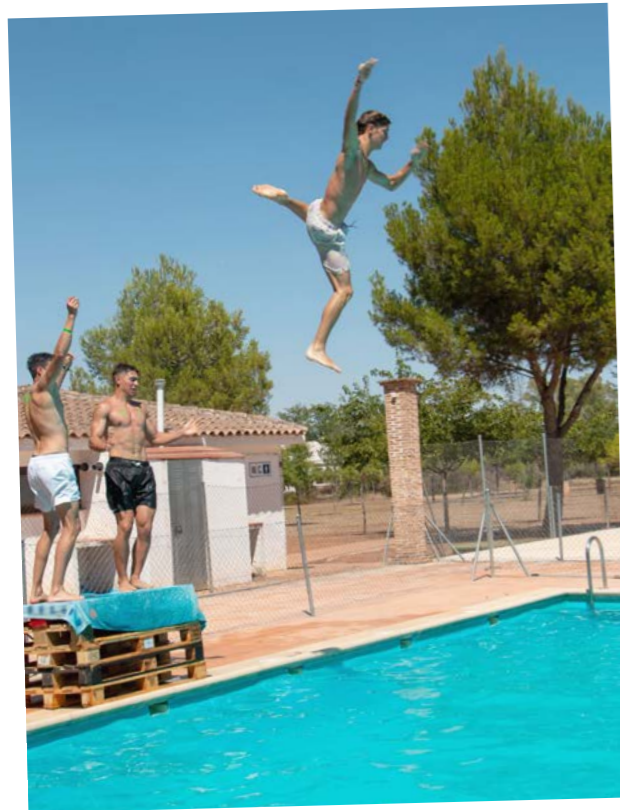
A New Generation with Eternal Values

Betel was founded on and remains dedicated to Christian principles and values. As a result, Betel's Youth and Children's ministries carry out diverse activities with the purpose of imparting these values to our young people. The socio-educational projects are designed to contribute to the full development and character building of children, teens and young adults in these crucial stages.

Among the many annual activities we organize, we emphasize biblical teaching, fun nights, hiking, nutrition courses, musical training and a Christmas mini-musical. Over the past decade, we have maintained the tradition of organizing two summer camps according to age. The first, aimed at children from 6 to 12 years old, was held from June 25 to 29, with the participation of **48 children** accompanied by 37 monitors. The second camp, for teenagers and young adults aged 13 and up, was held from August 10 to 14, with **167 campers** supported by **20 monitors**.



Ciudad Real, Spain
Betel's 2023 Children's Camp



Ciudad Real, Spain
Betel's Summer Camp for Teens and Young Adults

A Kilo of Love

Food for Families in Need

Each year, Betel helps hundreds of needy families through its food distribution ministry in Madrid and around the world. The work in Madrid is carried out at the Madrid Headquarters with two distribution channels:

Madrid Food Bank

As part of a collaboration agreement, food is distributed every fortnight to local families who can demonstrate their need, via a favorable report from Betel's social work team.

In 2023, Betel distributed a total of 34,000 kilos of food in Madrid through this channel,

helping 95 families with a total of 293 people, of which 165 were women and 128 men. Of these, 66% were immigrants, 34% were under 16 years of age and 7% were over 65.

Donated Food

This distribution channel, called *A Kilo of Love*, distributes food donated by local supermarkets and food businesses. The distribution is done weekly reaching a larger number of families in need. In 2023, the Kilo of Love ministry provided food distribution to 100 local families reaching 200 individuals.



Testimony

My name is David and I am 23 years old. I want to tell you about my experience as a volunteer with the Kilo of Love food distribution ministry of Betel. Together with my family and other volunteers from the church we are in charge of administering and distributing food to people who are in need. Doing this work helps me to understand the difficult situations of others. It is worth the effort, because we know that it is done for God and without Him we are nothing. I have been volunteering for 6 years and the food distribution has grown, helping many people to know God. We hope that it will continue like this, so that Jesus reaches every person and every family.

34.000

Kg

Food distributed
via the Madrid Food Bank

34% Spaniards

66% Immigrants

34% Under 16

59% Age 17 to 64

7% Above 65



Madrid, Spain
Kilo of Love food distribution

FAQ

What is the main purpose of Betel?

To take in and care for people at risk of social exclusion and with addiction problems.

How does it work?

A stay of 12 to 18 months is recommended. During this time, the resident advances in personal care and in the care of others, assuming more responsibility as he or she demonstrates reliability and commitment.

How is it financed?

The program is free of charge for 100% of its users. It is supported by the income generated by our projects and occupational activities, as well as by donations and grants.

How to enter

It's quick and easy: Contact the Betel office closest to you. See our international directory on page 39.

Admissions in Spain

900 264 840

Betel Language Academy



After its launch at the end of 2022, Betel Language Academy has continued to offer English classes to small groups in person and also on-line, preparing students for the official English level certification exams, mainly those of the University of Cambridge.

In 2023 16 students have enrolled in the Betel Language Academy.



Betel Malaga participates in the Evangelical Associations Exposition

On October 21, 2023, Betel took part in the Exhibition of Evangelical Associations of Malaga in the Plaza de la Merced. Betel received visits from authorities such as the Mayor of Malaga Mr. Francisco de la Torre, the City Councilor Mar Torres and the Delegate of the Junta de Andalusia Ruth Sarabia.



Betel team with the Mayor of Malaga D. Francisco de la Torre



Operation Christmas Child establishes process center in Betel

Betel has been collaborating for 5 consecutive years with Operation Christmas Child (OCC), the world's largest children's Christmas solidarity project, run by Franklin Graham's organization, Samaritan's Purse and coordinated in Spain by

Decision, a non-profit evangelical charity. In 2023 OCC Spain sent 46,255 small boxes full of gifts to children in Gabon, the Saharawi refugee camps in Algeria and other areas of North Africa.



Directors of Decision and Betel during Operation Christmas Child at the Betel Madrid headquarters

Caixabank Foundation collaborates with Betel Seville

The Caixa Foundation has given Betel €2,800, to carry out renovations at the headquarters of Betel Seville. Betel in Seville began in 1992 in the neighborhood of Bellavista, where it has its current headquarters.



Seville, Spain
Caixabank Foundation donation to Betel



Mallorca



Czech Republic

Betel in Asia

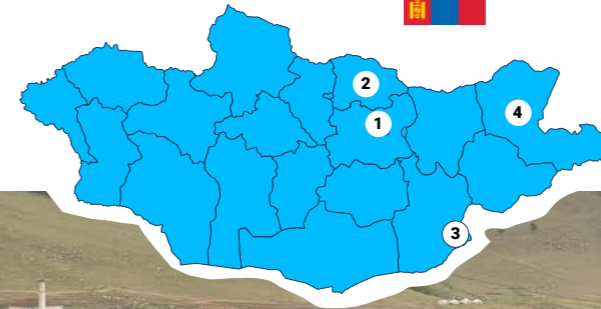
House of Hope



Communities in India

- | | |
|--------------------------|--------------------|
| Arunachal Pradesh | Nagaland |
| 1. Itanagar | 11. Dimapur |
| Assam | Punjab |
| 2. Darangamela | 12. Derabassi |
| 3. Guwahati | Rajasthan |
| 4. Tinsukia | 13. Jaipur |
| Delhi | 14. Jodhpur |
| 5. Nueva Delhi | 15. Udaipur |
| Haryana | Tamil Nadu |
| 6. Gurugram | 16. Coimbatore |
| Himachal Pradesh | 17. Mettupalayam |
| 7. Solan | 18. Ooty |
| Kerala | West Bengal |
| 8. Trivandrum | 19. Howrah |
| Meghalaya | 20. Kolkata |
| 9. Shillong | 21. Siliguri |
| 10. Tura | |

Mongolia



Communities in Mongolia

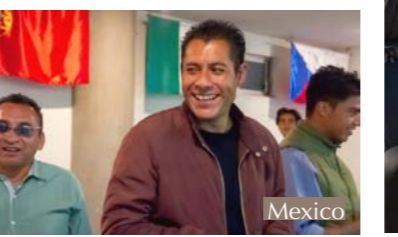
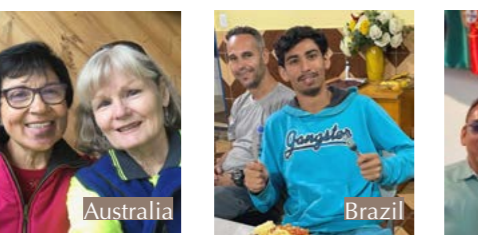
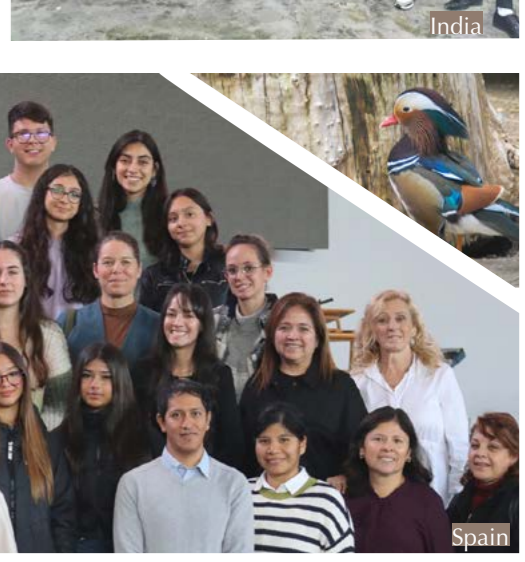
1. Ulaanbatar
2. Darhan
3. Zamiin Uud
4. Dornod



Annual Retreat for Pastors and Directors in Mongolia



Pastors and Directors in India



'Betania' 2023

International Camp Meeting

From August 25th through 27th, 2023, Betel International held its 36th annual camp at the Betania Retreat Center in Ciudad Real, with guest speakers from Betel Australia, Malaga and Madrid.

Betania is a center for retreats, camps and conferences that has been operating uninterruptedly for 24 years as an income generating project in Ciudad Real, Spain. The center's lodging space includes 300 beds and 28 rooms for couples with children. The property also includes a camping area with bathrooms and showers and a large multi-purpose summer auditorium for 2,000 people. Visitors enjoy the swimming pools, sports areas and children's playground. The dining hall seats up to 350 people and serves regional family style dishes.

retirosbetania-betel.org

36
Years of Camp Meetings

25
Years in Ciudad Real



Ciudad Real, Spain
Betel International
Camp meeting with the
theme *Horizons*



How You Can Help

Donate Used Furniture

We rely on donations of used furniture and other household items. Ask for a pick-up from your local Betel center. Spanish website: rastrobetel.org

Hire Us

We make deliveries, paint houses and clear out houses at affordable prices. For an estimate call: **900 264 840 (Spain)**

Volunteer

Make an impact by supporting Betel's program through international residential volunteering or part-time volunteering on an hourly basis. For more information, visit: betelinterns.org or call your local Betel center.

Donate

Each donation helps us fulfill our mission to restore lives. Donations have important tax benefits.

BIZUM: Donate with code: 09034

BANK TRANSFER:
ES16 2100 3279 0413 0026 6837 (CaixaBank)



Tax benefits for donors

DONATIONS	IS	IRPF
Donations in general	40%	-
First 250€	-	80%
Rest	-	40%
Multi-year Donations >250€	50%	45%
Taxable income deduction limit	15%	10%

Benefits have been increased in 2024. The concept of multi-year Donations is reduced from 3 to 2 years.

Transparency

Betel complies with the principles of transparency and good practices as a standard of operation of our social work.

The accounts for the year 2023 have been audited by Ms. Maria Elena Castejon Martin (R.O.A.C. nº 17.361), who declares that these accounts express a true and fair view of the accounts for 2023.

Cooperation agreements

- FERMAD* for the management of the grant project Residential Resources for Social Inclusion, charged to the 0.7% of the IRPF destined to social purposes of the Ministry of Family, Youth and Social Affairs of the Community of Madrid.

- Diaconia Madrid for the implementation of activities aimed at social vulnerable people within the SAUS project (Social Emergency Attention Service) financed by the Ministry of Family, Youth and Social Affairs of the Community of Madrid.

SUBVENCIONA 0,7% IRPF:



- General Secretary of Penitentiary Institutions for the fulfillment of Community Service sentences for individuals from outside Betel.

* FERMAD: Madrid Platform of Entities for the Assistance to the Addicted Person and his Family

Highlighted Agreements

- Ministry of Health of the Community of Madrid for the financing of the project "Housing in shelters and supervised apartments for drug addicts and ex-drug addicts with HIV".
- Ministry of Economy, Finance and Employment of the Community of Madrid, Incentive program for permanent employment

Membership



Directorio

Spain

ALGECIRAS
C/ Segismundo Moret, 7
11201 Algeciras · Cadiz
T. +34 956 58 70 08

ALICANTE
Av. Pintor Gaston Castello, 40 Bajo
03014 Alicante
T. +34 965 17 12 47

ALMERIA
C/ Hermanos Pinzon, 37 Local
04005 Almeria
T. +34 950 23 41 27

BARCELONA
C/ Santa Lluçia 10 Bajo
08191 Rubi · Barcelona
T. +34 93 588 63 24

BILBAO
Plaza Aita Patxi 2, Local 7
Entrada Errondoko
48015 Bilbao · Bizkaia
T. +34 94 416 26 17

CADIZ
C/ San Bruno, 28
11100 San Fernando · Cadiz
T. +34 956 17 61 88

CEUTA
Paseo de la Marina, 26
51001 Ceuta
T. +34 956 51 07 44

CIUDAD REAL
C/ Toledo, 34
13003 Ciudad Real
T. +34 926 22 89 13

CUENCA
C/ Zaragoza, 2 Bajo
16003 Cuenca
T. +34 969 21 29 33

GRANADA
Av. America, 53 Bajo
Barrio Zaidin
18008 Granada
T. +34 958 13 14 10

GUADALAJARA
C/ Wenceslao Argumosa, 13
Esq. Dr. Fleming
19003 Guadalajara
T. +34 949 22 97 69

HUELVA
Avda. de Cristobal Colon, 82
21002 Huelva
T. +34 959 28 21 91

MADRID · SEDE CENTRAL
C/ Antonia Rodriguez Sacristan, 8
28044 Madrid
T. +34 91 525 22 22

MALAGA
Av. Jose Ortega y Gasset, 286
Poligono El Viso · 29006 Malaga
T. +34 952 33 49 26

MALLORCA
C/ Francisco Fiol y Juan, 7, Bajo
07010 Palma de Mallorca
T. +34 971 75 38 82

MOTRIL
Plaza San Sebastian, 3
18600 Motril · Granada
T. +34 958 60 02 06

ORENSE
C/ Nuestra Señora de la Sainza
8 Bajo
32005 Orense
T. +34 988 25 37 51

SEVILLE
C/ Jardin de la Isla, 6-M, Expolocal
41014 Seville
T. +34 95 468 08 45

TARRAGONA
Travessera Nou de Sant Josep, 17
43204 Reus · Tarragona
T. +34 977 77 69 83

VALENCIA
Ctra. D'Escriva 6 Bajo
46007 Valencia
T. +34 96 341 04 33

ZARAGOZA
C/ Arias, 35
50010 Zaragoza
T. +34 976 53 48 84

Internacional

Africa
NORTH AFRICA
T. +34 956 51 07 44

SOUTH AFRICA
Suite 197, Private Bag x4, Menlo
Park 0102 · Pretoria
T. +27 793 84 87 61

Asia
INDIA
T. +91 124 351 11 31

KAZAKHSTAN
T. +7 778 328 7375

MONGOLIA
Songinhairhan District
Area 3, 1-10
Ulaanbaatar City
T. +976 997 96824

NEPAL
T. +977 980 106 0066

America
BRAZIL
Alameda dos Eucaliptus, 750
Chacara Seabra 06900-000
Embu-Guaçu · São Paulo
T. +55 11 967 369 058

MEXICO
Ferrocarril, 3 Lomas de San Juan
72700 Cuautlancingo · Puebla
T. +52 22 22302445

Europe
GERMANY
Wasbeker Str 276
24537 Neumünster
T. +49 4321 179495

BULGARIA
Ul. Pop Bogomil, 49
Sofia 1202
T. +359 2 83 52 68

FINLAND
Lyyranpolku, 1
01480 Vantaa · Finland
T. +358 445 477 767

FRANCE
72 Rue Monte Cristo
13004 · Marseille
T. +33 4 910 25415

ITALIA
Via Roma, 509
80017 Melito di Napoli · NA
T. +39 081 060 82 91

PORTUGAL
Avda. 25 de Abril de 1974, 5A
2800-300 Almada · Lisboa
T. +35 121 276 3168

UK
Windmill House
Weatheroak Hill
Alvechurch · Birmingham
B48 7EA
T. +44 121 594 0650

CZECH REPUBLIC
U Hrbítova , 939
27801 Kralupy nad Vltavou
T. +42 0731 501 150

RUSSIA
Ambulatornaya Street 53,
Novo-Ivanovskoe
Mokovskaya Oblast
143026 Moscow
T. +7 915 322 88 25

Oceania
Australia
PO Box 806 Lilydale
3140 Victoria
T. +61 1300 904 505



Left: Betel Mongolia leaders. **Right:** Community of Kolkata, India. **Below:** Community of Shillong, India

Betel

Antonia Rodriguez Sacristan, 8
28044 Madrid Spain

Telephone: +34 91 525 2222

Email: madrid@betel.org

Spain: betelespana.org

International: betel.org



betel.org